

## What to Expect: Track Work, Power, Stations, Bridges



Workers set crossover switch at Innovation Center Station. (Courtesy of John Kearney)

Silver Line construction contractors meandered through the below-freezing, near record-low temperatures along with snow and ice, and are looking toward some busy months as Phase 2 work continues from the Wiehle-Reston East Metro station to the end of the line in Ashburn.

Here's a look at some of what to expect and what

not to expect in the coming months:

- **Toll Road, Airport Highway:** Over the next several months, between the hours of 10 p.m. and 5 a.m. each night, portions of the eastbound Dulles International Airport Access Highway (DIAAH) will be closed and traffic will be diverted to eastbound Dulles

Toll Road (DTR). Work is expected to begin in early February. Lane closures will also occur on the DTR and the Dulles Greenway. Detours and lane closures will allow project crews to continue heavy construction work near Innovation Station, Herndon Station and Reston Station. Detours are necessary to position a large crane on the eastbound DIAAH. Details will be coming soon.

- **Pedestrian Tunnel:** Work continues on the pedestrian tunnel that will carry passengers on moving sidewalks to and from the main terminal at Dulles Airport

and parking garage 1. Moving sidewalks will be tested. Shuttles continue to run until the tunnel reopens in late summer.

- **Track work:** Track installations will take place all along the alignment. Retaining wall construction continues in the median of the DIAAH. Yard lead work continues and aerial guideway track at the airport is being prepared for installation of equipment.
- **Electric Power:** Energizing the electrical systems in selected sections of track and service buildings such as traction power substations will begin.

See *SILVER LINE* on page 2

## Winter Coat Drive: Warming Hearts and Homeless

In the spirit of giving, the Dulles Corridor Metrorail Project (DCMP) partnered with Capital Rail Constructors (CRC) to support the annual Winter Coat Donation Drive sponsored by Fairfax Supervisor Cathy Hudgins and the nonprofit Cornerstones.

Together DCMP and CRC donated approximately **200** coats and **50** winter accessories. These items go to local, unsheltered adults and children to help prevent frostbite, hypothermia and illness.

During winter, the homeless population is at a higher risk of suffering these symptoms than most. With temperatures reaching as low as 7°F, a warm coat and a thick scarf can save a life!

Supervisor Hudgins' office will be accepting coats through March 8, 2018.



Amanda Scarangella and Leslie Pereira pose with the pile of donated winter coats and accessories. (Courtesy of Dulles Corridor Metrorail Project)

From page 1 SILVER LINE

Communications and power lines are being relocated to allow access to the west end of the Herndon Parking Garage.

- **Reston Town Center Station:** Installations on pedestrian bridges on the north side of the station and finishing work on bridges on the south side.
- **Herndon Station:** Construction of the pavilion on the north side of the station between the DTR and Herndon Parkway will begin soon. Fairfax County continues to work on a parking garage it is building near the existing Herndon-Monroe Park and Ride.

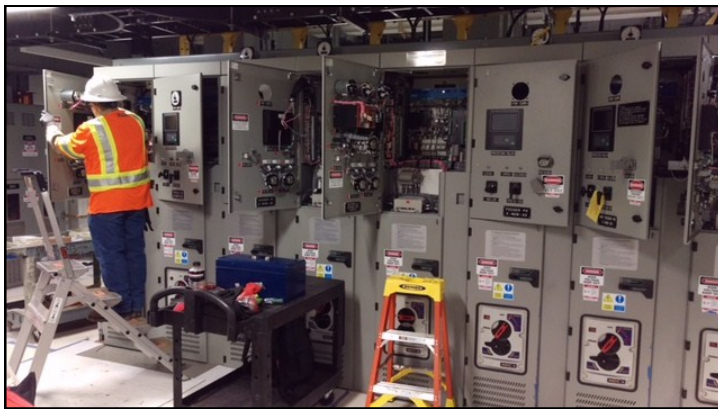
Work on the roofing of the station vault is headed for completion. Slight changes in the DTR location are being made.

- **Innovation Center Station:** The most complete of all the stations, roofing work nearly complete as work on the pavilions and pedestrian bridges continues.
- **Dulles Airport Station:** Clearly visible as crews work to complete the roof. Electrical work continues.
- **Loudoun Gateway Station:** Station precast work continues and

pedestrian bridges are in place.

- **Ashburn Station:** Steel roof erection began in January. Pedestrian bridges have been installed on south side and are almost ready for installation on the north side.
- **Rail Yard:** Duct banks and manholes are being installed.
- **Start-up:** Preliminary planning for start-up will continue involving contractors, the Airports Authority and the Washington Metropolitan Area Transit Authority.

## Year in Review: Progress all Along the Silver Line



Inside of a TPSS building working to reconnect the internal wiring after the TPSS modular building was delivered in sections and erected on site. (Courtesy of John Kearney)

The second phase of the Dulles Corridor Metrorail Project (DCMP) closed out a busy year in 2017, and hit several milestones along the way.

In January 2017, all 251 column supports for the Dulles Airport Metrorail Station aerial guideway were completed and Capital Rail Con-

structors (CRC) crews began installing both ballasted and direct fixated track.

April 2017 brought with it the arrival of pedestrian bridge spans on site. Track work continued and the first of the prefabricated traction power substation buildings was installed. Construction of Phase 2 officially reached

56 percent.

Structural steel started going up for maintenance facilities and other structures at the Rail Yard in May 2017. These facilities will be critical to maintaining clean, durable Metrorail trains for many years to come.

Throughout the summer, crews were busy roughing in the mechanical, electrical and plumbing systems at four stations.

By August 2017, CRC crews began putting in place pedestrian bridges. These bridges will provide access for Metrorail passengers to reach the Silver Line stations. The first pedestrian bridge was set on the south side of Innovation Center

Metrorail Station.

As autumn rolled around, construction of the aerial guideway structure at Dulles Airport Metrorail Station was completed.

In the spirit of the holiday season, DCMP and CRC partnered to provide **181** full Thanksgiving meals to families in Fairfax and Loudoun counties as part of the Loudoun Hunger Relief and Reston Cornerstones 2017 Thanksgiving Donation Drive in November.

By December's end, Phase 2 of the Silver Line had achieved more than 5 million labor hours. That translated into 66 percent construction completion.

Contact the Dulles Corridor Metrorail Project's Communications and Outreach Office at (703) 572-0506 or [outreach@dullesmetro.com](mailto:outreach@dullesmetro.com). To report construction concerns, call the Project Hotline at 1 (844) 385-7245.



Follow us on  
Twitter  
[@DullesMetrorail](https://twitter.com/DullesMetrorail)