

Dulles Metro is Coming

January 2010



Major Changes Coming to Route 123 and Route 7

Drivers in Tysons Corner should look for lane shifts and changing traffic patterns along the area's two busiest roads — Route 7 and Route 123 — as construction of the Dulles Corridor Metrorail Project continues.

What to Expect Along Route 123 From the Dulles Connector Road (Route 267) South to the Capital Beltway (I-495)

• Now through early February:

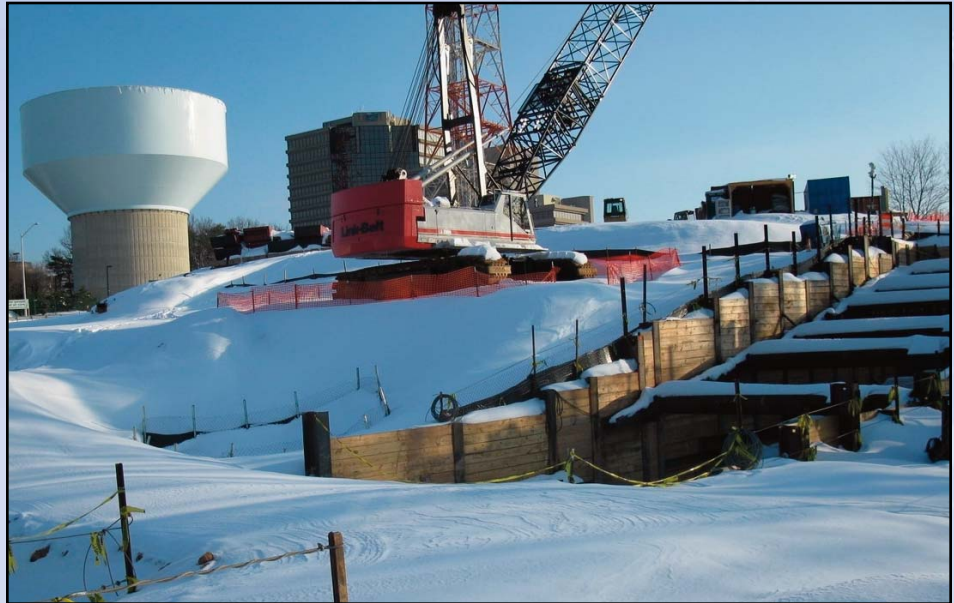
- Lane closings weeknights on northbound and southbound lanes between the Dulles Connector Road and the Capital Beltway to install a new gas line,

- Nighttime detours for traffic entering and exiting the Capital One complex,

- and the closing of one turn lane from Old Meadow Road onto Route 123 toward Tysons Corner Center.

• Early to mid-February:

- Closings of two lanes of Scotts Crossing Road from the Gates of McLean to Route 123
- and closing of the southbound right lane of Route 123 from Scotts Crossing Road to the Beltway. **These closings will last approximately two years to support construction of the future Tysons East Metro station.**



The west cut-and-cover portion of the tunnel in Tysons (located at the Route 7/Route 123 interchange), as seen on the day of the big snow in December. Photo by Dulles Corridor Metrorail Project

What to Expect Along Route 7 From Route 123 West to the Dulles Toll Road

- Service roads on both sides of Route 7 will continue to close.

- Additional mid-block left turns will be eliminated.

- Traffic patterns on eastbound Route 7 between Route 123 and Gosnell Road will shift to make room for tunnel and station construction.

- Retaining walls will continue to be built along the south side of the service roads along eastbound Route 7 as crews must build up sections of those service roads to the same elevations as Route 7. **Watch for this work near Best Buy and Pike 7 Plaza.**

- Along Frontage Road (on the opposite side of Route 7 from Marshalls), occasional nighttime detours and traffic pattern changes will continue.

Station Construction Underway

Site preparation and foundation work will continue on the Tysons East station along the northwest side of Route 123 at Scotts Crossing Road.

Construction has started on the Wiehle Avenue station in the median of the Dulles International Airport Access Highway (DIAAH) between Wiehle Avenue and Reston Parkway. **Motorists using the DIAAH should be alert for construction.**

CONSTRUCTION HOTLINE

For construction-related emergencies, call the Dulles Corridor Metrorail Project Hotline at 877-585-6789.

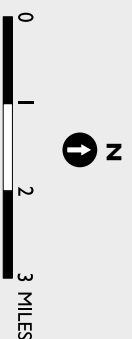
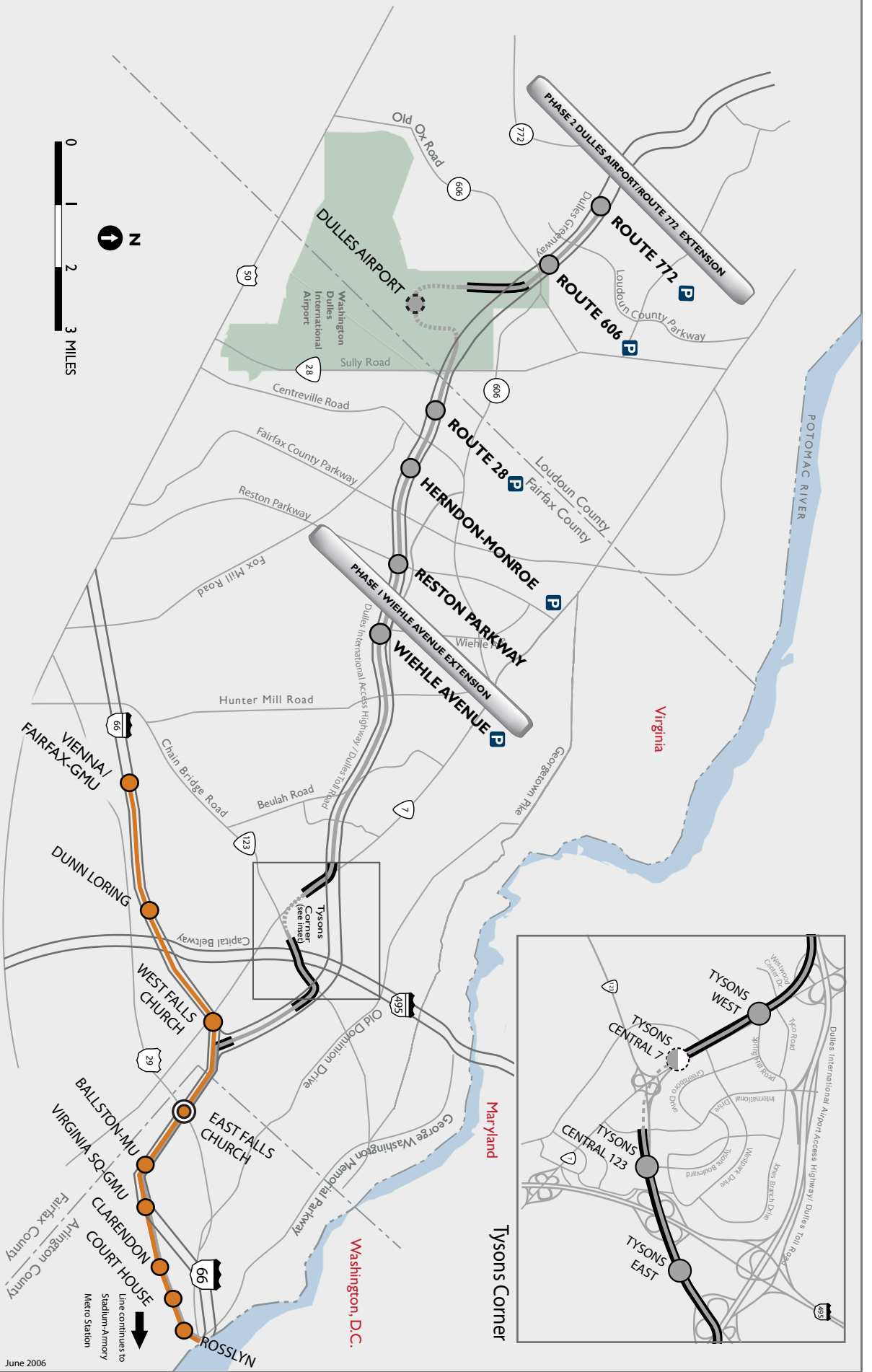
WANT TO KNOW MORE?

To set up a briefing for your homeowners association, civic group, professional or business group, or business, please email outreach@dullesmetro.com or call (703) 448-5550.

TRAFFIC ADVISORY SIGN UP

Please visit www.dullesmetro.com/info/signup.cfm to sign up for our traffic advisory email blasts.

For general information on the Dulles Corridor Metrorail Project, please visit our website at www.dullesmetro.com or call (703) 572-0506.



LEGEND

- Existing Metrorail
- Orange Line and Station
- New Station
- Partially Below Surface Station
- Underground Station
- Surface Track
- Elevated Track
- Underground Track
- Parking

For More Information Contact
www.dullesmetro.com
 703-572-0500



**DULLES CORRIDOR
 METRO RAIL PROJECT**