

June 12, 2014

CONTACT: Marcia McAllister  
T: 703-572-0506  
C: 571-730-9117  
[Marcia.McAllister@dullesmetro.com](mailto:Marcia.McAllister@dullesmetro.com)

**Dulles Corridor Metrorail Project  
PHASE 2**  
19

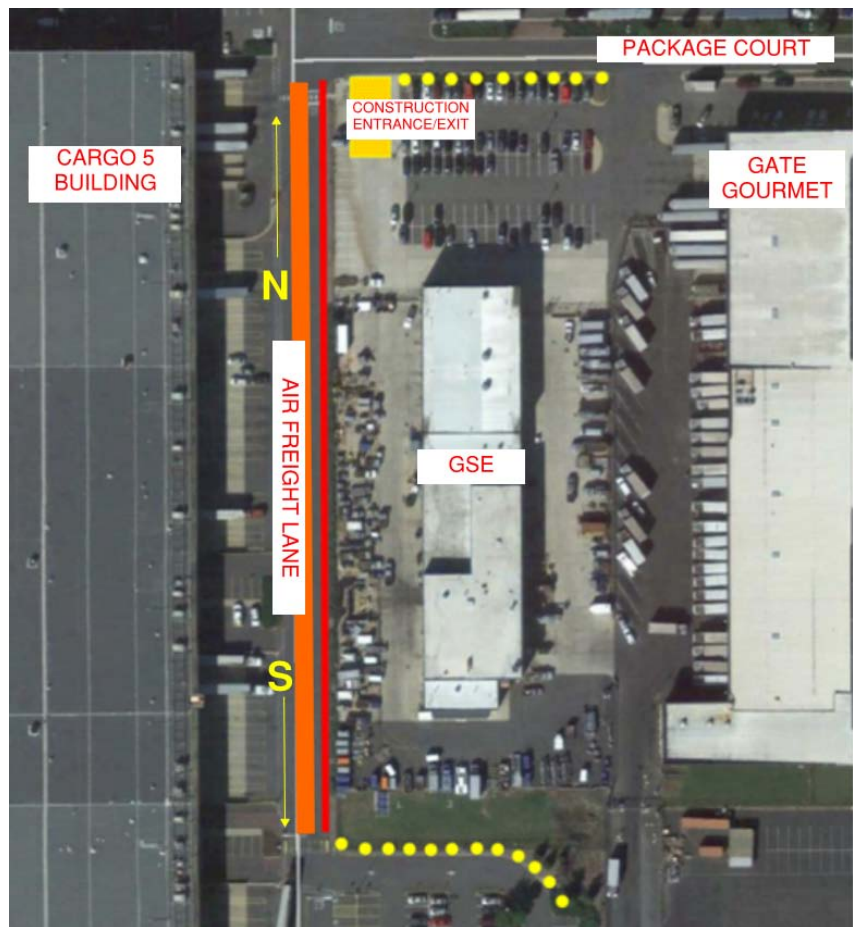
## GSE Site Demolition Begins at Washington Dulles International Airport

During the week of June 16, Dulles Corridor Metrorail Project crews will begin demolition work on the retaining wall along the east side of Air Freight Lane to make way for construction of the Silver Line's aerial guideway at Washington Dulles International Airport.

The northbound lane of Air Freight Lane will be partially closed on or about June 16 and 17, from 9 a.m. to 2 p.m., for the installation of concrete barriers that will separate the work from the roadway. Flaggers will be in place to direct traffic during the work, and the loading docks in the Cargo 5 building will be accessible at all times.

Additional demolition and construction activities will occur at the GSE site in June and July. Traffic signs and barriers will be in place along Package Court, and drivers may encounter slow-moving vehicles entering and exiting the site. All work is weather-dependent and subject to change.

Those interested in receiving up-to-date information on the progress of the Dulles Corridor Metrorail Project - Phase 2 can sign up at [www.dullesmetro.com](http://www.dullesmetro.com).



The orange line indicates the impacted lane and the red line indicates concrete barrier placement. Yellow circles show placement of drums or barrels.

<><><><><>

A 24/7 emergency hotline is available for Dulles Corridor Metrorail Project - Phase 2 construction-related issues: 844-385-7245.

For general project information: [www.dullesmetro.com](http://www.dullesmetro.com) or 703-572-0506.