

October 16, 2014

CONTACT: Marcia McAllister  
T: 703-572-0506  
C: 571-730-9117  
[Marcia.McAllister@dullesmetro.com](mailto:Marcia.McAllister@dullesmetro.com)

**Dulles Corridor Metrorail Project  
PHASE 2**

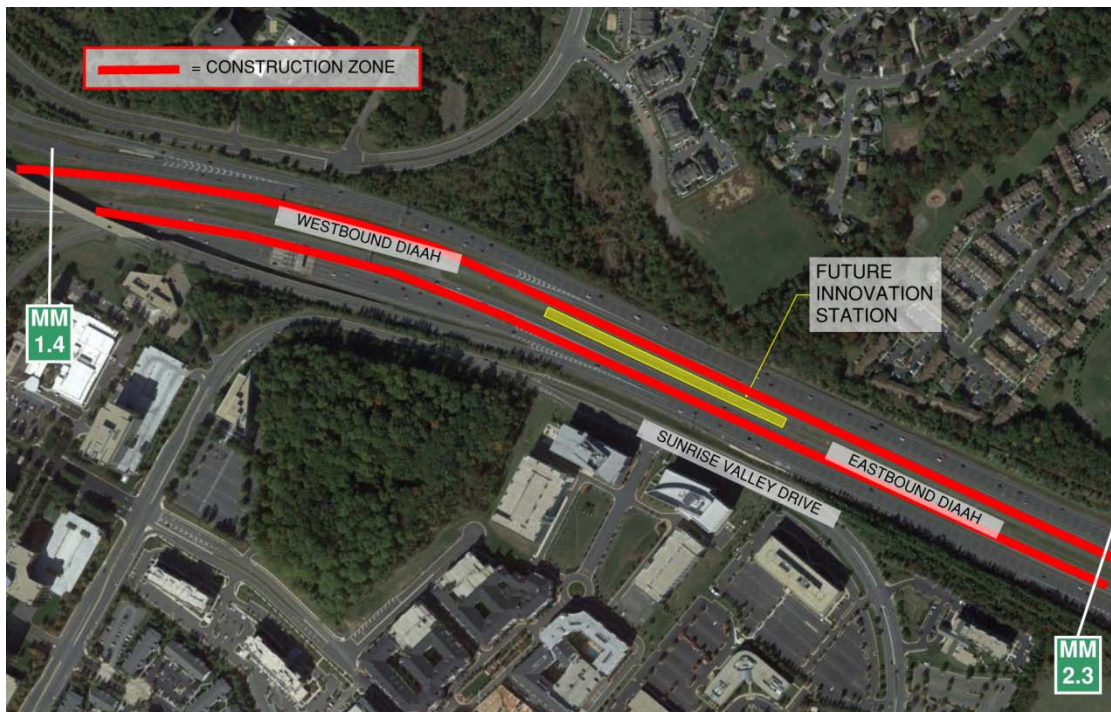
31

## Road Work Begins Along the Dulles International Airport Access Highway

On or about Monday, October 20, Dulles Corridor Metrorail Project crews will begin road work along the Dulles International Airport Access Highway (DIAAH), between Centreville Road and Route 28 (from mile marker 2.3 to 1.4), in the vicinity of the Silver Line's future Innovation Center Station. The roads will be widened and lanes shifted to provide room for the construction of the new station in the median. The work will take place on both the eastbound and westbound DIAAH during daytime and nighttime hours and is expected to continue for approximately six weeks.

Shoulders and lanes will be closed and reopened in phases as crews conduct grading, milling, paving, striping, and utility relocation operations. Large, slow-moving vehicles may be exiting and entering the highway at various times. Drivers on both the DIAAH and Dulles Toll Road are asked to exercise caution and remain very attentive to all signage, barricades, and other changing conditions while passing through construction zones.

All work is weather dependent and subject to change.



<><><><><>

A 24/7 emergency hotline is available for Dulles Corridor Metrorail Project construction-related issues: 844-385-7245. For general project information: [www.dullesmetro.com](http://www.dullesmetro.com) or 703-572-0506.